



Product Range

Uniroyal. A brand of Continental.*
www.uniroyal-tyres.com/transport

*Under exclusive licence in Europe.

COMMERCIAL
VEHICLE TYRES



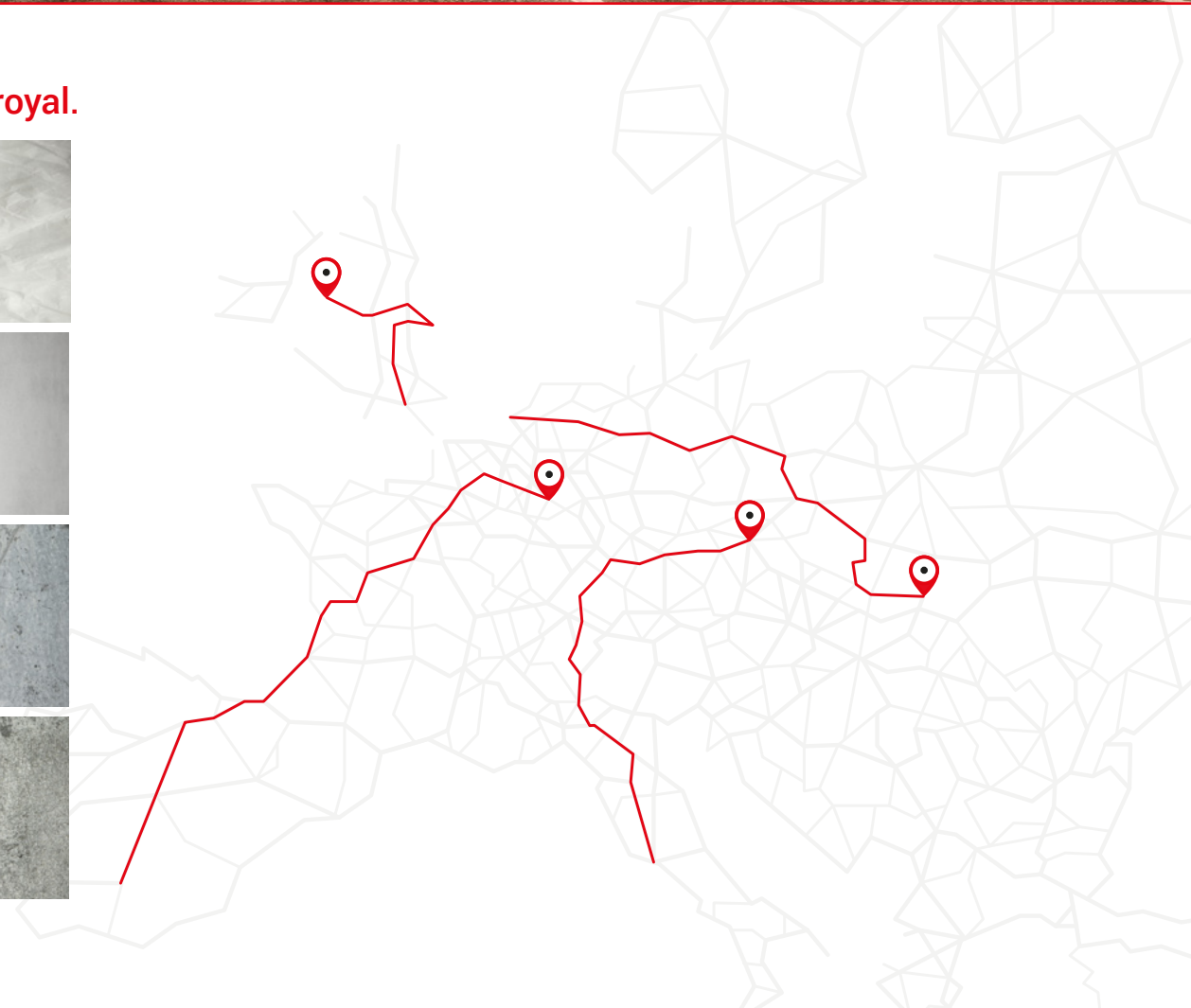
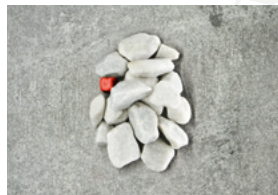
About Uniroyal

From everywhere to anywhere. With Uniroyal.

Backed by Uniroyal commercial vehicle tyres, transport businesses and their employees can be confident in contributing to the global availability of goods. Whatever the route, whatever the cargo – Uniroyal offers individual tyre fitment options for every application.

By combining high mileage performance, excellent regroovability and retreadability, Uniroyal commercial vehicle tyres are a convincing proposition on any axle – technically as well as economically.

As a part of the Continental Group, Uniroyal's future-orientated approach to research and development ensures technological competence and state-of-the-art safety standards at a high level of quality.





Uniroyal Products

Axle position	Highway	On-/Off-Road
Front (Steer axle)	FH 40	FM 40
		T 9F
Drive (Drive axle)	DH 40	DM 40
	DH 100	
Trailer (Trailer axle)	TH 40	T 70
	TH 50	T 500
	TH 200	

The right solution for any task

Our main objective is to enable boundless mobility for the transport industry. Therefore we offer the right solution for any task: whether it be light trucks for short-haul and regional traffic, trucks for on-/off-road usage or long-distance coaches, our product range includes tyres for any scenario.

The Uniroyal highway line provides high mileage in both regional and long-distance transport, increasing the cost-efficiency by utilising a combination of optimised tread patterns on all axles.

For use in construction sites, our on-/off-road line offers specialised tyres for the steer, drive and trailer axles, providing a strong grip even on loose surfaces and durability under the most unforgiving conditions.



Uniroyal 40 Series

The new generation

The Uniroyal 40 series comprises our latest achievements in development for regional applications and long-distance routes.

It was specifically tailored to meet the needs of today's road transport businesses, providing them with consistent performance and safety.

All tyres from the Uniroyal 40 series are equipped with a new inner liner and a reinforced bead, increasing the air tightness and service life of the tyre.

FH 40 front axle tyre



Feature

Enhanced tread compound

Benefit

Significant mileage gain

Feature

New tread pattern design

Benefit

Even wear

Feature

Special sipe technology in the tread design

Benefit

Improved wet performance



DH 40 drive axle tyre



Feature

Even wear characteristics

Benefit

Greater mileage performance

Feature

Optimised belt cord

Benefit

Improved endurance

Feature

Optimised tread design

Benefit

Enhanced traction on wet roads and snow



TH 40 trailer axle tyre



Feature

High wear volume

Benefit

Highly increased mileage performance

Feature

New tread compound

Benefit

High cut resistance

Benefit

Improved wet performance over lifetime



Overview Highway Line

Front Axle



FH 40

-|II-



245/70 R 17.5	● ●
205/75 R 17.5	● ●
215/75 R 17.5	● ●
225/75 R 17.5	● ●
235/75 R 17.5	● ●
245/70 R 19.5	● ●
265/70 R 19.5	● ●
285/70 R 19.5	● ●
385/55 R 22.5	● ●
315/60 R 22.5	● ●
385/65 R 22.5	● ●
315/70 R 22.5	● ●
295/80 R 22.5	● ●
315/80 R 22.5	● ●

EU TYRE LABEL VALUES

Fuel Efficiency: C-D

Wet Braking: B-C

Noise Level: 69-73 dB / A

● M+S ● M+S

● 3PMSF 

-|II- Also for all wheel positions

Overview Highway Line

Drive Axle



DH 40



245/70 R 17.5	● ●
205/75 R 17.5	● ●
215/75 R 17.5	● ●
225/75 R 17.5	● ●
235/75 R 17.5	● ●
245/70 R 19.5	● ●
265/70 R 19.5	● ●
285/70 R 19.5	● ●
315/70 R 22.5	● ●
295/80 R 22.5	● ●
315/80 R 22.5	● ●

EU TYRE LABEL VALUES

Fuel Efficiency: D
Wet Braking: C
Noise Level: 73-76 dB / A-B



DH 100



295/60 R 22.5	● ●
315/60 R 22.5	● ●

EU TYRE LABEL VALUES

Fuel Efficiency: D
Wet Braking: C
Noise Level: 76 dB / B

Overview Highway Line

Trailer Axle



TH 40



- 245/70 R 17.5 ●
- 215/75 R 17.5 ●
- 235/75 R 17.5 ●
- 245/70 R 19.5 ●
- 285/70 R 19.5 ●
- 385/55 R 22.5 ●
- 385/65 R 22.5 ●

EU TYRE LABEL VALUES

Fuel Efficiency: B-D
 Wet Braking: B-C
 Noise Level: 69-70 dB / A



TH 50



- 385/55 R 22.5 ●●
- 385/65 R 22.5 ●●

Coming in 2022

EU TYRE LABEL VALUES

Fuel Efficiency: **
 Wet Braking: **
 Noise Level: **



TH 200



- 265/70 R 19.5

EU TYRE LABEL VALUES

Fuel Efficiency: D
 Wet Braking: C
 Noise Level: 70 dB / A

● M+S **M+S**

● 3PMSF

** values in preparation

Overview On-/Off-Road Line

Front Axle



FM 40



315/80 R 22.5



EU TYRE LABEL VALUES

Fuel Efficiency: D
Wet Braking: B
Noise Level: 73 dB / B



monoplly
T 9F



14.00 R 20



EU TYRE LABEL VALUES

Fuel Efficiency: **
Wet Braking: **
Noise Level: **



** Article out of regulation for EU Label

Overview On-/Off-Road Line

Drive & Trailer Axle



DM 40



315/80 R 22.5



EU TYRE LABEL VALUES

Fuel Efficiency: D
Wet Braking: B
Noise Level: 75 dB / B



monopoly
T 70



9 R 22.5



EU TYRE LABEL VALUES

Fuel Efficiency: E
Wet Braking: C
Noise Level: 73 dB / B



monopoly
T 500



385/65 R 22.5



EU TYRE LABEL VALUES

Fuel Efficiency: C
Wet Braking: C
Noise Level: 73 dB / B

● M+S

● 3PMSF

Specifications Highway

Size	Pattern	LI/SI ¹⁾	Speed index and ref. speed (km/h)	TT/ TL ²⁾	PR	EU tyre label					Rim	Min. dis. between rim centres	Max. standard in service		Design value		Stat. radius +/-1.5%	Rolling circumference +/-2%	LI ¹⁾	Tyre fitment	Load capacity (kg) per axle at inflation pressure ⁶⁾ (bar) (psi)									
						3)	4)	5)	M+S	Tread wear icon			Width	Outer-Ø	Width +1%	Outer-Ø +/-1%					4.5 (65)	5.0 (73)	5.5 (80)	6.0 (87)	6.5 (94)	7.0 (102)	7.5 (109)	8.0 (116)	8.5 (123)	9.0 (131)
245/70 R 17.5	FH 40	136/134 M	M 130	TL	14	D	C	71/A	M+S		6.75	270	250	803	240	789	364	2406	146	S	3590	3870	4150	4425	4695	4965	5225	5485	5745	
	DH 40	136/134 M	M 130	TL	14	D	C	74/B	M+S		7.50	279	258		248				143	S	3405	3675	3940	4200	4455	4710	4955	5205	5450	
	TH 40	143/141 L (146/146 F)	L 120 (F 80)	TL	16	C	B	70/A	M+S										136	S	2930	3160	3390	3610	3835	4050	4265	4480		
205/75 R 17.5	FH 40	124/122 M	M 130	TL	12	D	C	71/A	M+S		5.25	222	205		197				124	S	2310	2495	2675	2850	3025	3200				
	DH 40	124/122 M	M 130	TL	12	D	C	74/B	M+S		6.00	231	213	765	205	753	353	2297	122	D	4335	4680	5015	5350	5675	6000				
	TH 40	124/122 M	M 130	TL	12	D	C	74/B	M+S		6.75	239	220		212				136	S	2930	3160	3390	3610	3835	4050	4265	4480		
215/75 R 17.5	FH 40	126/124 M	M 130	TL	12	D	C	71/A	M+S		6.00	239	220	779	212	767	359	2339	135	S	2720	2940	3150	3360	3565	3765	3965	4165	4360	
	DH 40	126/124 M	M 130	TL	12	D	C	75/B	M+S		6.75	246	228		219				126	S	2595	2800	3005	3200	3400					
	TH 40	135/133 K	K 110	TL	16	D	C	70/A	M+S										133	D	5145	5555	5955	6350	6735	7120	7495	7870	8240	
225/75 R 17.5	FH 40	129/127 M	M 130	TL	12	D	C	71/A	M+S		6.00	246	228		219				129	S	2675	2885	3095	3295	3500	3700				
	DH 40	129/127 M	M 130	TL	12	D	C	74/B	M+S		6.75	254	235	797	226	783	366	2388	127	D	5060	5460	5855	6240	6620	7000				
	TH 40	129/127 M	M 130	TL	12	D	C	74/B	M+S		6.75	254	235	797	226	783	366	2388	127	D	5060	5460	5855	6240	6620	7000				
235/75 R 17.5	FH 40	132/130 M	M 130	TL	12	D	C	71/A	M+S		6.75	262	242	811	233	797	372	2431	144	S	3495	3775	4045	4315	4580	4835	5095	5345	5600	
	DH 40	132/130 M	M 130	TL	12	D	C	74/B	M+S		7.50	271	251		241				143	S	3405	3675	3940	4200	4455	4710	4955	5205	5450	
	TH 40	143/141 K (144/144 F)	K 110 (F 80)	TL	16	C	B	70/A	M+S										132	S	2745	2960	3175	3385	3590	3795	4000			
																			144	D	6995	7550	8095	8630	9160	9675	10190	10695	11200	
																			141	D	6435	6945	7445	7935	8420	8900	9370	9835	10300	
																			130	D	5215	5630	6035	6435	6825	7215	7600			

Data acc. to DIN 7805/4, WdK-Guidelines 134/2, 142/2, 143/14, 143/25

1) Load index single/dual wheel fitment and speed symbol 2) TT = Tube Type, TL = Tubeless 3) Fuel efficiency 4) Wet grip 5) External rolling noise (db) 6) For tyre pressures of 8.0 bar (116 psi) or greater, use valve slit cover plate

*** values in preparation

Specifications Highway

Size	Pattern	LI/SI ¹⁾	Speed index and ref. speed (km/h)	TT/ TL ²⁾	PR	EU tyre label					Rim	Min. dis. between rim centres	Max. standard in service		Design value		Stat. radius +/-1.5%	Rolling circumference +/-2%	LI ¹⁾	Tyre fitment	Load capacity (kg) per axle at inflation pressure ⁶⁾ (bar) (psi)									
						3)	4)	5)	M+S	6)			Width	Outer-Ø	Width +1%	Outer-Ø +/-1%					4.5 (65)	5.0 (73)	5.5 (80)	6.0 (87)	6.5 (94)	7.0 (102)	7.5 (109)	8.0 (116)	8.5 (123)	9.0 (131)
245/70 R 19.5	FH 40	136/134 M	M 130	TL	16	D	B	71/A	M+S		6.75	270	250	853	240	839	389	2559	141	S	3095	3365	3635	3895	4155	4405	4655	4905	5150	
	DH 40	136/134 M	M 130	TL	16	D	C	74/A	M+S		7.50	279	258		248				136	S	2690	2930	3160	3390	3610	3835	4050	4265	4480	
	TH 40	141/140 K	K 110	TL	16	C	C	70/A	M+S										140	D	6010	6540	7055	7565	8065	8560	9045	9525	10000	
265/70 R 19.5	FH 40	140/138 M	M 130	TL	14	D	B	71/A	M+S		6.75	286	264		254				143	S		3560	3845	4120	4395	4665	4930	5190	5450	
	DH 40	140/138 M	M 130	TL	16	D	C	74/B	M+S		7.50	295	272	881	262	867	401	2644	140	S	3155	3430	3700	3970	4230	4490	4745	5000		
	TH 200	143/141 J	J 100	TL	18	D	C	70/A			8.25	303	280		269				141	D	5955	6735	7270	7795	8310	8815	9315	9810	10300	
285/70 R 19.5	FH 40	146/144 M	M 130	TL	16	D	B	71/A	M+S		7.50	311	287		276				150	S		4185	4515	4840	5160	5475	5790	6095	6400	6700
	DH 40	146/144 M	M 130	TL	16	D	C	76/B	M+S		8.25	318	294	911	283	895	413	2730	146	S	3445	3745	4045	4335	4620	4905	5185	5460	5730	6000
	TH 40	150/148 K	K 110	TL	18	C	C	70/A	M+S		9.00	327	303		291				148	D	3485	3790	4090	4385	4675	4965	5245	5525	5800	
																			144	D	6430	6995	7550	8095	8630	9160	9675	10190	10695	11200
																			143	D	6550	7125	7690	8245	8790	9330	9860	10380	10900	

Data acc. to DIN 7805/4, WdK-Guidelines 134/2, 142/2, 143/14, 143/25

1) Load index single/dual wheel fitment and speed symbol 2) TT = Tube Type, TL = Tubeless 3) Fuel efficiency 4) Wet grip 5) External rolling noise (db) 6) For tyre pressures of 8.0 bar (116 psi) or greater, use valve slit cover plate








Specifications Highway

Size	Pattern	LI/SI ¹⁾	Speed index and ref. speed (km/h)	TT/ TL ²⁾	PR	EU tyre label					Rim	Min. dis. between rim centres	Max. standard in service		Design value		Stat. radius +/-1.5%	Rolling circumference +/-2%	LI ¹⁾	Tyre fitment	Load capacity (kg) per axle at inflation pressure ⁶⁾ (bar) (psi)										
						3)	4)	5)	M+S	Tread wear			Width	Outer-Ø	Width +1%	Outer-Ø +/-1%					4.5 (65)	5.0 (73)	5.5 (80)	6.0 (87)	6.5 (94)	7.0 (102)	7.5 (109)	8.0 (116)	8.5 (123)	9.0 (131)	
385/55 R 22.5	FH 40	160/-K (158/-L)	K 110 (L 120)	TL	20	C	B	73/B	M+S		11.75 12.25	396 401	1012	381 386	996	464	3018	160 158	S S	5165 5110	5620 5555	6065 6000	6505 6430	6935 6855	7360 7275	7775 7690	8190 8095	8595 8500	9000		
	TH 40	160/-K	K 110	TL	20	B	B	70/A	M+S																						
295/60 R 22.5	DH 100	150/147 L	L 120	TL	18	D	C	76/B	M+S		9.00 9.75	329 338	304 312	940	292 300	926	435	2806	150 147	S D	3845 7060	4185 7685	4515 8290	4840 8890	5160 9480	5475 10055	5790 10630	6095 11190	6400 11750	6700 12300	
315/60 R 22.5	FH 40	154/148 L	L 120	TL	20	C	B	71/A	M+S		9.00 9.75	344 352	318 326	966	306 313	950	445	2879	154 152 148	S S D	4305 4075 7235	4685 4435 7870	5055 4785 8495	5420 5130 9105	5780 5470 9710	6130 5805 10305	6480 6135 10885	6825 6460 11465	7160 6780 12035	7500 7100 12600	
	DH 100	152/148 L	L 120	TL	20	D	C	76/B	M+S																						
385/65 R 22.5	FH 40	160/-K (158/-L)	K 110 (L 120)	TL	20	C	B	73/B	M+S		11.75 12.25		405 410	1092	389 394	1072	496	3248	164 160 158	S S S	5740 5165 5110	6245 5620 5555	6740 6065 6000	7225 6505 6430	7705 6935 6855	8175 7360 7275	8640 7775 7690	9100 8190 8095	9550 9000 8500	10000	
	TH 40	160/-K	K 110	TL	20	C	B	69/A	M+S																						
315/70 R 22.5	FH 40	156/150 L (154/150 M)	L 120 (M 130)	TL	20	C	B	71/A	M+S		9.00 9.75	351 360	318 326	1032	312 320	1014	468	3093	156 154 152 150 148	S S S D D	4590 4305 4265 7695 7575	4995 4685 4640 8370 8240	5390 5055 5010 9035 8890	5780 5420 5370 9685 9535	6165 5780 5725 10325 10165	6540 6130 6075 10955 10785	6910 6480 6420 11580 11395	7280 7160 6760 12195 12000	7640 7100 7100 12800 12600	8000	
	DH 40	154/150 L (152/148 M)	L 120 (M 130)	TL	20	D	C	73/A	M+S																						
295/80 R 22.5	FH 40	154/149 M	M 130	TL	16	C	B	69/A	M+S		8.25 9.00	326 335	302 310	1062	290 298	1044	487	3184	154 152 149 148	S S D D	4505 4265 7815 7575	4905 4640 8500 8240	5290 5010 9175 8890	5675 5370 9835 9535	6050 5725 10485 10165	6420 6075 11125 10785	6785 6420 11760 11395	7140 6760 12380 12000	7500 7100 13000 12600		
	DH 40	152/148 M	M 130	TL	16	D	C	73/A	M+S																						
315/80 R 22.5	FH 40	156/150 L (154/150 M)	L 120 (M 130)	TL	20	C	B	69/A	M+S		9.00 9.75	351 360	318 326	1096	312 320	1076	500	3282	156 154 150	S S D	4590 4505 8055	4995 4905 8760	5390 5290 9455	5780 5675 10140	6165 6050 10810	6540 6420 11470	6910 6785 12120	7280 7140 12765	7640 7500 13400	8000	
	DH 40	156/150 L (154/150 M)	L 120 (M 130)	TL	20	D	C	73/A	M+S																						

Data acc. to DIN 7805/4, WdK-Guidelines 134/2, 142/2, 143/14, 143/25

1) Load index single/dual wheel fitment and speed symbol 2) TT = Tube Type, TL = Tubeless 3) Fuel efficiency 4) Wet grip 5) External rolling noise (db) 6) For tyre pressures of 8.0 bar (116 psi) or greater, use valve slit cover plate

Specifications On-/Off-Road

Size	Pattern	LI/SI ¹⁾	Speed index and ref. speed (km/h)	TT/TL ²⁾	PR	EU tyre label				Rim	Min. dis. between rim centres	Max. standard in service		Design value		Stat. radius +/-1.5%	Rolling circumference +/-2%	LI ¹⁾	Tyre fitment	Load capacity (kg) per axle at inflation pressure ⁶⁾ (bar) (psi)											
						 ³⁾	 ⁴⁾	 ⁵⁾	M+S			Width	Outer-Ø	Width +1%	Outer-Ø +/-1%					4.5 (65)	5.0 (73)	5.5 (80)	6.0 (87)	6.5 (94)	7.0 (102)	7.5 (109)	8.0 (116)	8.5 (123)	9.0 (131)		
385/65 R 22.5	T 500	160/-K	K 110	TL	14	C	C	73/B	M+S		11.75 12.25	405 410	1092	389 394	1072	496	3248	160	S	5165	5620	6065	6505	6935	7360	7775	8190	8595	9000		
315/80 R 22.5	FM 40	156/150 K	K 110	TL	20	D	B	73/B	M+S		9.00 9.75	351 360	318 326	1096	312 320	1076	500	3282	156 150	S D	4590 8055	4995 8760	5390 9455	5780 10140	6165 10810	6540 11470	6910 12120	7280 12765	7640 13400	8000	
	DM 40	156/150 K	K 110	TL	20	D	B	75/B	M+S																						
9 R 22.5	T 70	133/131 K	K 110	TL	12	E	C	73/B	M+S		6.00 6.75	250 259	231 239	986	222 230	970	455	2959	133 131	S D	2890 5475	3145 5955	3395 6430	3640 6895	3880 7350	4120 7800					
	T 70	133/131 K	K 110	TL	12	-	-	-	M+S																						
7.00 R 16	T 9+	113/112 N	N 140	TL	10	-	-	-	M+S		5.50 6.00	228 235	206 212	799	198 204	784	362	2376	113 112	S D	1615 3145	1755 3420	1895 3690	2030 3960	2165 4220	2300 4480					
	T 9+	113/112 N	N 140	TL	10	-	-	-	M+S																						
14.00 R 20	T 9F	160/157 G	G 90	TL	18	-	-	-	M+S		9.00	414	367		360				160	S		6875	7420	7955	8480	9000					
											10.00	426	377	1268	370	1238	564	3776	157	D		12605	13600	14585	15550	16500					

Data acc. to DIN 7805/4, WdK-Guidelines 134/2, 142/2, 143/14, 143/25

1) Load index single/dual wheel fitment and speed symbol 2) TT = Tube Type, TL = Tubeless 3) Fuel efficiency 4) Wet grip 5) External rolling noise (db) 6) For tyre pressures of 8.0 bar (116 psi) or greater, use valve slit cover plate

Regrooving recommendations

Regrooving

A tread depth of at least 1.6 mm over the entire circumference of the tyre is required on public road. To further increase the service life and economy of Uniroyal tyres, the so-called undertread can be regrooved. The undertread refers to the layer between the top side of the belt and the tread grooves (see figure).

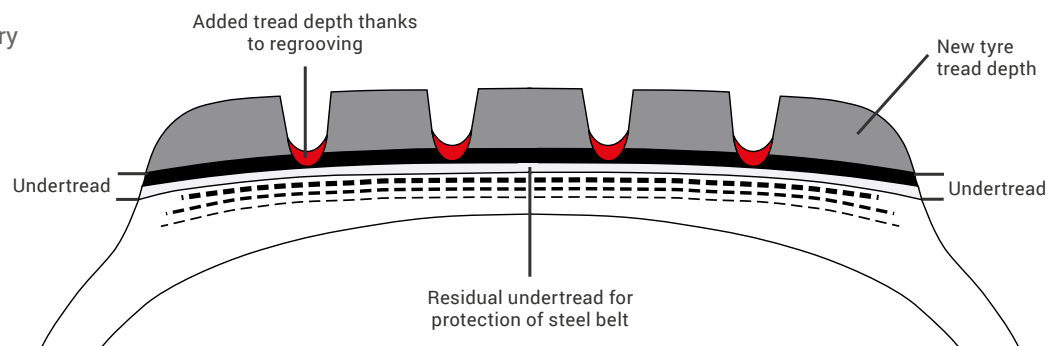
Regulation:

Provided it is marked "REGROOVABLE", a commercial vehicle tyre may be regrooved down to a residual undertread thickness of 2 mm above the breaker or belt. All additional regulations of the respective country have to be met.

In order to exploit the full kilometre reserve regrooving affords, it is absolutely essential that the work be carried out in a thoroughly professional manner. This is all the more important if the tyres are supposed to be subsequently retreaded. Cutting the tread too deeply in the course of regrooving could damage the steel belt, resulting in the formation of rust. Not only does this increase the risk of tyre failure, but the tyre's retreading suitability is also severely reduced.

The following should always be adhered to when regrooving:

- Stones or other foreign material lodged in the tread must be removed.
- The tread pattern must be maintained at every point on the tyre. There must not be any bald spots.
- The most worn spot on the tyre determines the depth setting for the regrooving tool.
- The regrooving depth indicated in the table for the respective tyre size and tread pattern type must be added to the minimum tread depth. The regrooving knife is set to this combined depth.
- Only professional regrooving tools should be used.
- Regrooving operations should always be carried out as shown in the following figures.
- After regrooving, the grooves must be checked for any signs of exposed belt wire. If the wire is exposed at any point, the tyre may not be used.

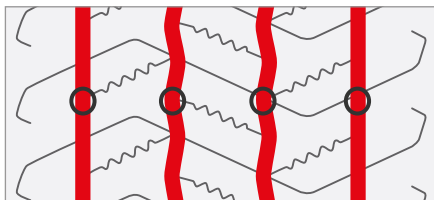




FH 40

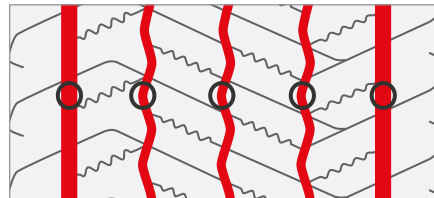


Size	Depth (mm)	Width (mm)
245/70 R 17.5	2.0	8

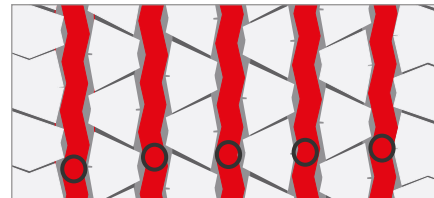


Size	Depth (mm)	Width (mm)
315/70 R 22.5	2.0	10
295/80 R 22.5	3.0	10
315/80 R 22.5	3.0	10

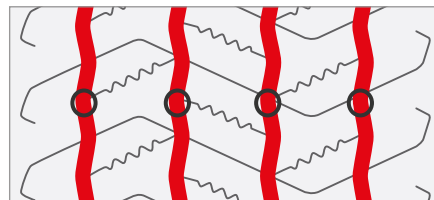
FH 100



Size	Depth (mm)	Width (mm)
385/55 R 22.5	3.0	A:11/B:8
385/65 R 22.5	3.0	A:11/B:8



Size	Depth (mm)	Width (mm)
315/60 R 22.5	3.5	11-12

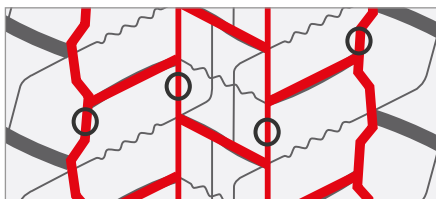


Size	Depth (mm)	Width (mm)
205/75 R 17.5	2.5	7
215/75 R 17.5	2.5	7
225/75 R 17.5	2.5	7
235/75 R 17.5	2.5	7

■ Tread gauging points

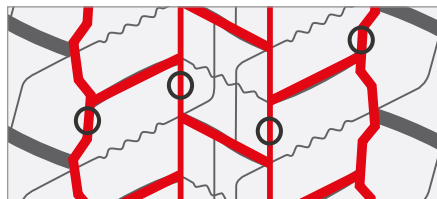


DH 40



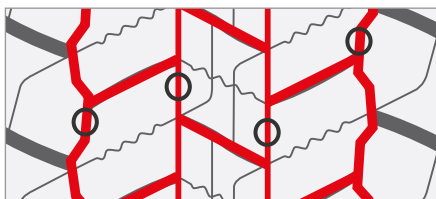
A A B A B A A

Size	Depth (mm)	Width (mm)
205/75 R 17.5	2.5	A:10/B:5
215/75 R 17.5	2.0	A:10/B:5
225/75 R 17.5	2.5	A:10/B:5
235/75 R 17.5	2.5	A:10/B:5



A A B A B A A

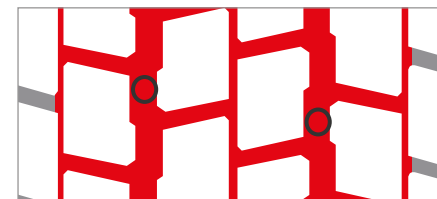
Size	Depth (mm)	Width (mm)
315/70 R 22.5	2.0	A:7/B:5
295/80 R 22.5	3.0	A:7/B:5
315/80 R 22.5	3.0	A:7/B:5



A A B A B A A

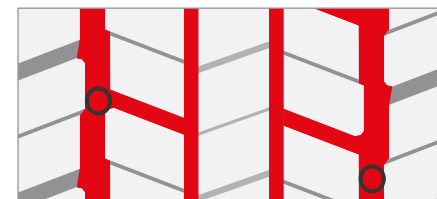
Size	Depth (mm)	Width (mm)
245/70 R 17.5	2.0	A:10/B:5

DH 100



B A B A B

Size	Depth (mm)	Width (mm)
245/70 R 19.5	3.0	A:11/B:5
265/70 R 19.5	2.5	A:11/B:5
285/70 R 19.5	2.5	A:11/B:5

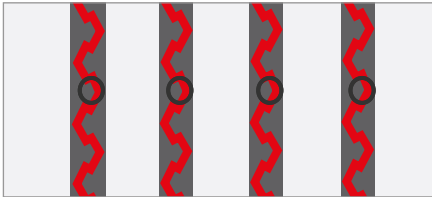


A B B A

Size	Depth (mm)	Width (mm)
295/60 R 22.5	2.5	A:8-10/B:3-4
315/60 R 22.5	3.5	A:8-10/B:3-4

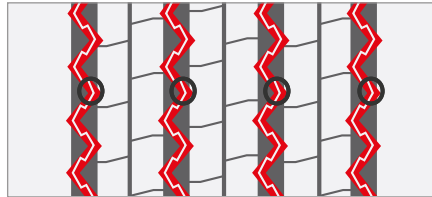


TH 40



Size	Depth (mm)	Width (mm)
205/65 R 17.5	2.0	6

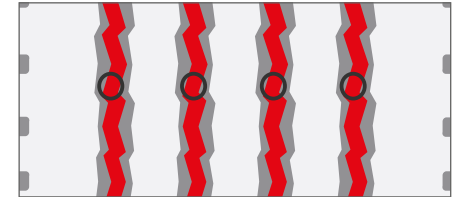
TH 50*



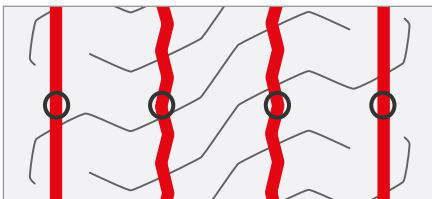
Size	Depth (mm)	Width (mm)
245/70 R 19.5	3.0	7
285/70 R 19.5	3.0	7



TH 200



Size	Depth (mm)	Width (mm)
265/70 R 19.5	3.0	8



Size	Depth (mm)	Width (mm)
385/55 R 22.5	3.0	10
385/65 R 22.5	3.0	9

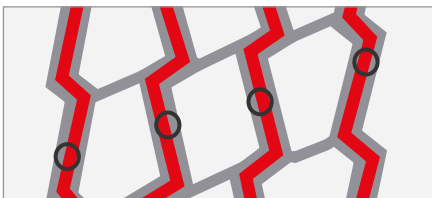


Size	Depth (mm)	Width (mm)
245/70 R 17.5	2.0	9
215/75 R 17.5	2.0	7
235/75 R 17.5	2.0	7



On-/Off-Road

FM 40



Size	Depth (mm)	Width (mm)
315/80 R 22.5	3.0	10

monoply T 9F



Size	Depth (mm)	Width (mm)
14.00 R 20	2.0	10

DM 40



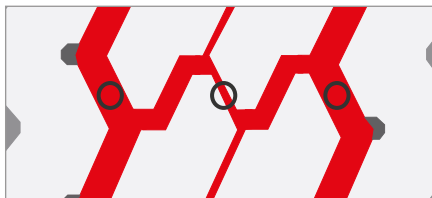
Size	Depth (mm)	Width (mm)
315/80 R 22.5	3.0	9

monoply T 70



Size	Depth (mm)	Width (mm)
9 R 22.5	2.0	13

monoply T 500



Size	Depth (mm)	Width (mm)
385/65 R 22.5	3.5	A:12/B:6

EU Tyre Label 2021

Information on the new EU regulation

Uniroyal welcomes the new EU tyre labelling rules, extending the scheme to cover heavy-duty vehicles. It provides consumers, fleet operators and tyre retailers with objective, reliable and comparable information on three important tyre performance characteristics: the tyre's rolling resistance, wet grip and external rolling noise. A pictogram indicating if the tyre is suitable for use in severe snow conditions (winter and all-season tyres) is present in tyres fulfilling such performance levels.

Find out more online: the EU tyre label generator

Find out more about the parameter values of Uniroyal tyres online: comprehensive, clear and accessible at all times. With the label generator you can quickly and easily find the appropriate EU tyre label parameters for your Uniroyal tyres. Visit our label generator online at:

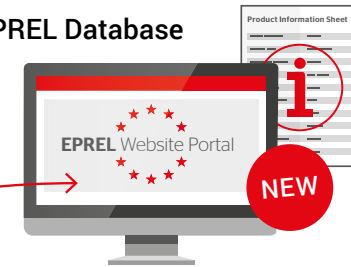
www.uniroyal-tyres.com/transport/services/eu-tyre-label

The new EU tyre label

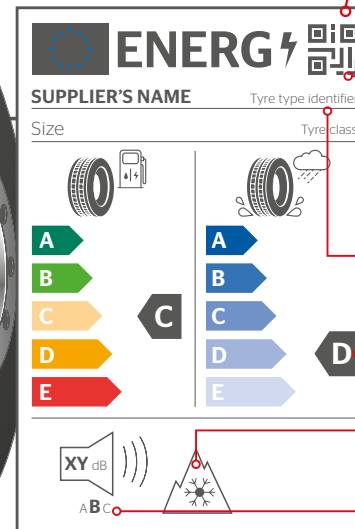


The new EU tyre labelling scheme is effective from **1st May 2021**.

EPREL Database



The EU tyre label



What's new?

QR code individual per "tyre type identifier" with Link to new European Product Database for Energy Labelling (EPREL), where the tyre label and the product information sheet can be accessed in different file formats.


Additional information (tyre type identifier = art. no.)

Reclassification for lower label classes: D is the new E; F and G merge to form E.

Options for including pictograms relating to severe snow conditions (3PMSF).

Noise classes: ABC replace sound waves.

All new label parameters including the links to the label and product information sheet will also be provided via our electronic price catalogue (PRICAT) for direct use in ERP systems.



© 2022 by Uniroyal Commercial Vehicle Tyres

All rights reserved.

Reproduction, reprint or any other form of duplication – even as excerpts – is permitted only with prior authorisation from UNIROYAL.

The contents of this manual were compiled with the greatest care and reflect decades of experience. While all data and tips are correct to the best of our knowledge, they do not represent a guarantee of properties. In using this manual it should be kept in mind that certain specifications may no longer be up-to-date, mainly as a result of technical progress.

No liability for damage of any kind or for any legal reason can be assumed for the advice given in this manual.

Continental Reifen Deutschland GmbH
Commercial Vehicle Tyres – Uniroyal

Büttnerstraße 25 | 30165 Hannover | Germany
www.uniroyal-tyres.com/transport



65DK2.en

COMMERCIAL
VEHICLE TYRES

